



BETA RICAMBI

Tel. 081 8507823 / 8638945 - Fax 081 8500351

DEVIATORI E VALVOLE

Beta Ricambi



Hydraulic Division

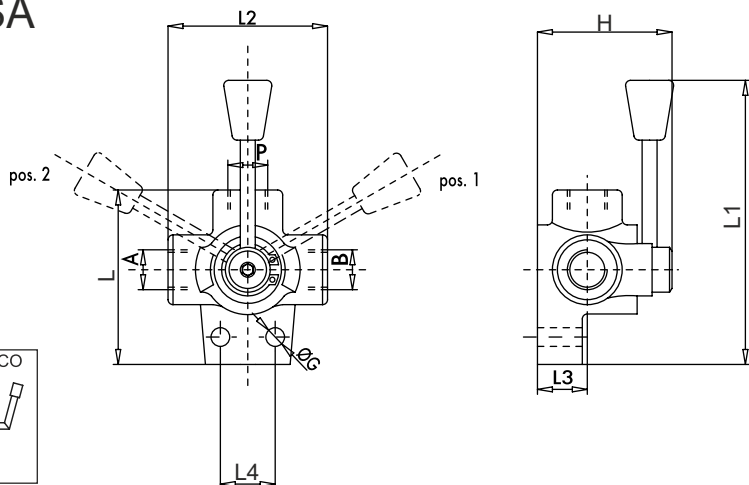
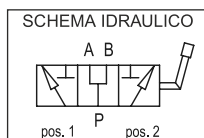
www.betaricambi.it



DEVIATORE FLUSSO 3 VIE

Beta Ricambi

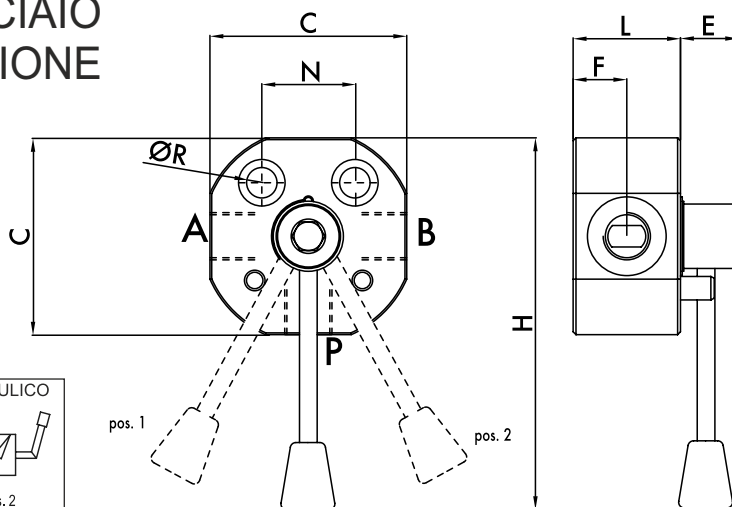
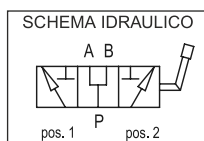
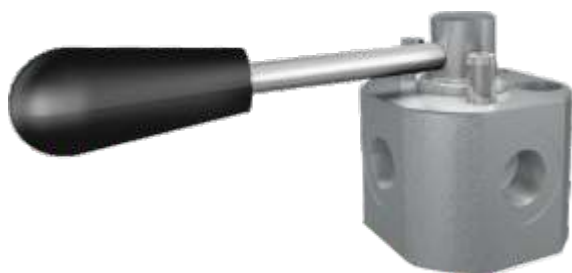
DEVIATORE DI FLUSSO 3 VIE IN GHISA



CODICE	A-B-P	L	L1	L2	L3	L4	ØG	H	PORTATA MAX Lt. / min	PRESSIONE MAX Bar
ND065	1/4"	80	160	72	18	25	8,5	62	25	250
ND048	3/8"	76	140	68	25	26	8,5	67	35	250
ND047	1/2"	87	145	80	28	32	8,5	70	60	250
ND094	3/4"	103	150	94	30	32	11	78	100	250
ND064	1"	105	152	98	30	32	11	82	180	250

*Misure espresse in mm

DEVIATORE DI FLUSSO 3 VIE IN ACCIAIO ALTA PRESSIONE



CODICE	A-B-P	C	N	H	ØR	F	L	E	PORTATA MAX Lt. / min	PRESSIONE MAX Bar
ND082/1	1/4"	56	26	148	8,5	23,5	42,5	21	20	500
ND082	3/8"	56	26	148	8,5	23,5	42,5	21	35	500
ND083	1/2"	70	32	160	10,5	26	42,5	21	60	500
ND069	3/4"	80	32	165	10,5	31	58	20	100	500
ND072	1"	90	32	170	10,5	33	62	20	180	500

*Misure espresse in mm

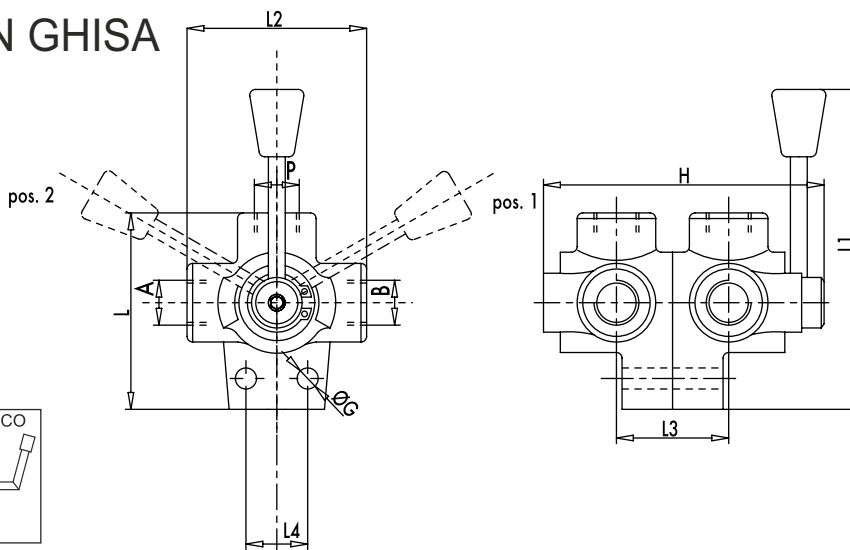
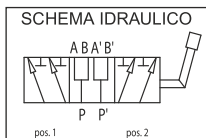
Hydraulic Division



DEVIATORE FLUSSO

Beta Ricambi

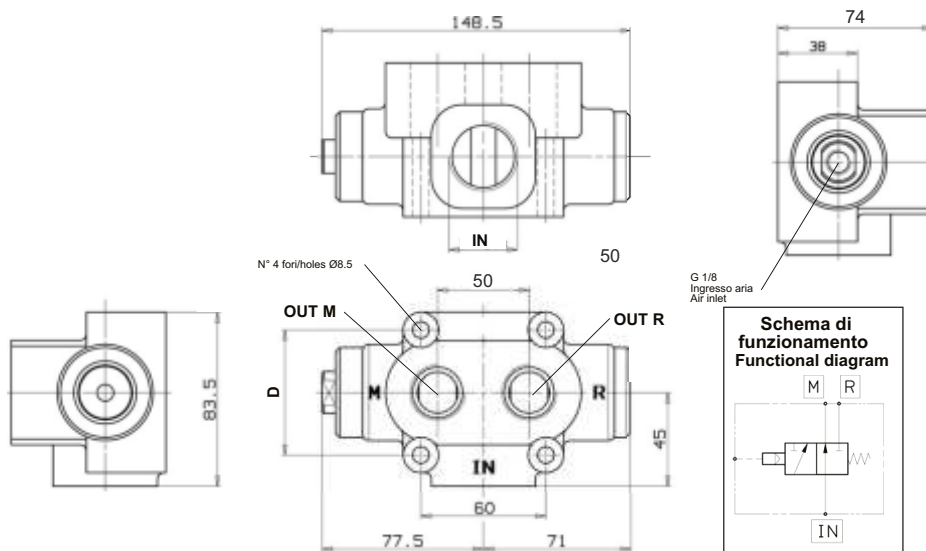
DEVIATORE DI FLUSSO 6 VIE IN GHISA



CODICE	A-B-P	L	L1	L2	L3	L4	ØG	H	PORTATA MAX Lt. / min	PRESSIONE MAX Bar
ND081A	3/8"	76	140	68	45	26	8,5	117	35	250
ND081	1/2"	87	145	80	51	32	8,5	125	60	250
ND081B	3/4"	103	150	94	55	32	11	140	100	250
ND081C	1"	105	152	98	60	32	11	155	180	250

*Misure espresse in mm

DEVIATORE DI FLUSSO 3 VIE PNEUMATICO



CODICE	IN	M-R	D	PORTATA MAX Lt. / min	PRESSIONE MAX Bar
ND091	1"	3/4"	60	250	400
ND092	1"	1"	65	250	400

*Misure espresse in mm



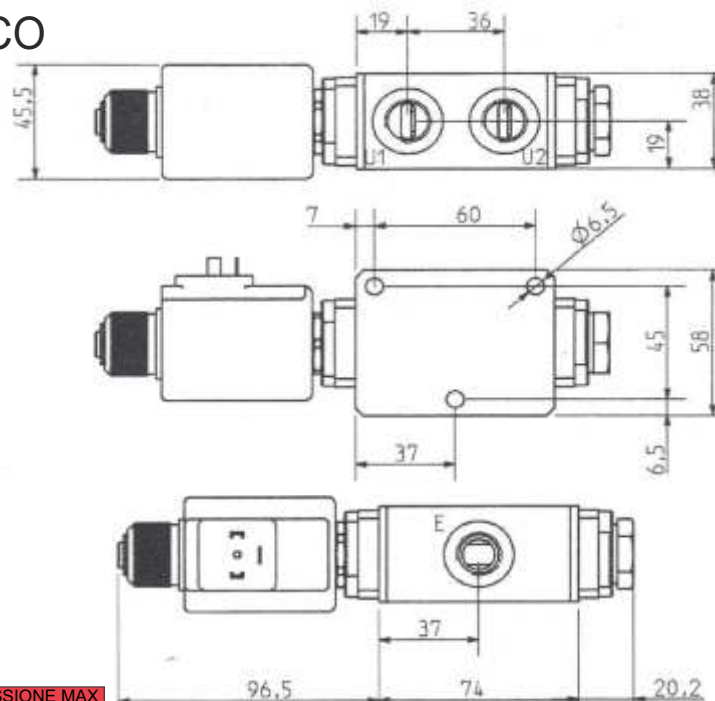
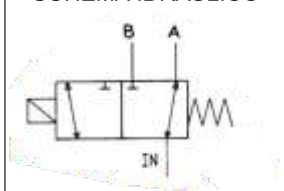
DEVIATORE FLUSSO 3 VIE ELETTRICO

Beta Ricambi

DEVIATORE DI FLUSSO 3 VIE ELETTRICO



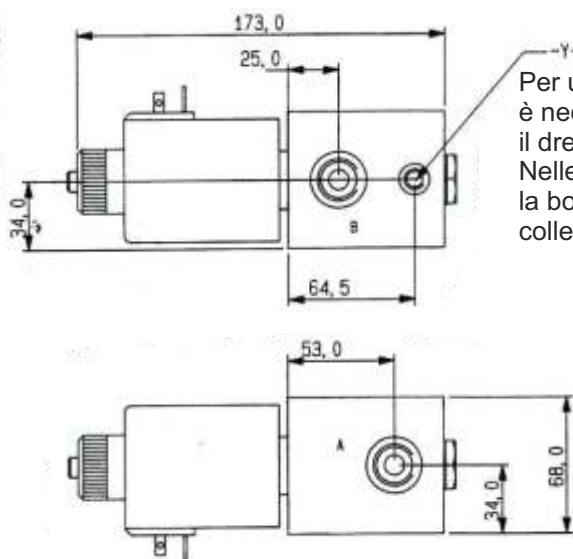
SCHEMA IDRAULICO



CODICE	IN	A-B	Volt	PORTATA MAX Lt. / min	PRESSIONE MAX Bar
ND088	3/8"	3/8"	12	40	260
ND088A	3/8"	3/8"	24	40	260

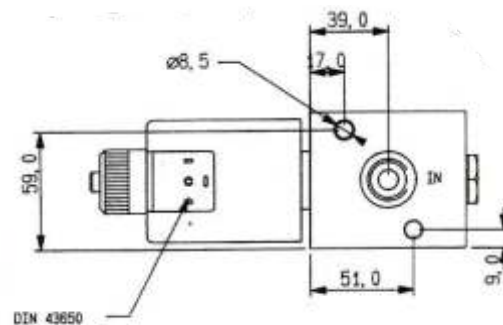
*Misure espresse in mm

DEVIATORE DI FLUSSO 3 VIE ELETTRICO

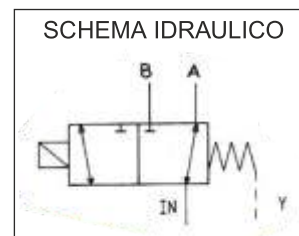


-Y- DRAIN

Per un corretto funzionamento è necessario collegare il drenaggio Y a scarico. Nelle valvole senza drenaggio la bocca A deve essere collegata a scarico.



SCHEMA IDRAULICO



CODICE	IN	A-B	Volt	PORTATA MAX Lt. / min	PRESSIONE MAX Bar
ND089	1/2"	1/2"	24	75	250
ND090	3/4"	3/4"	24	75	250

*Misure espresse in mm

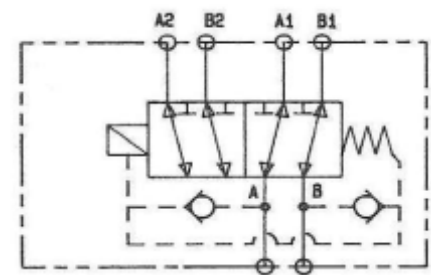
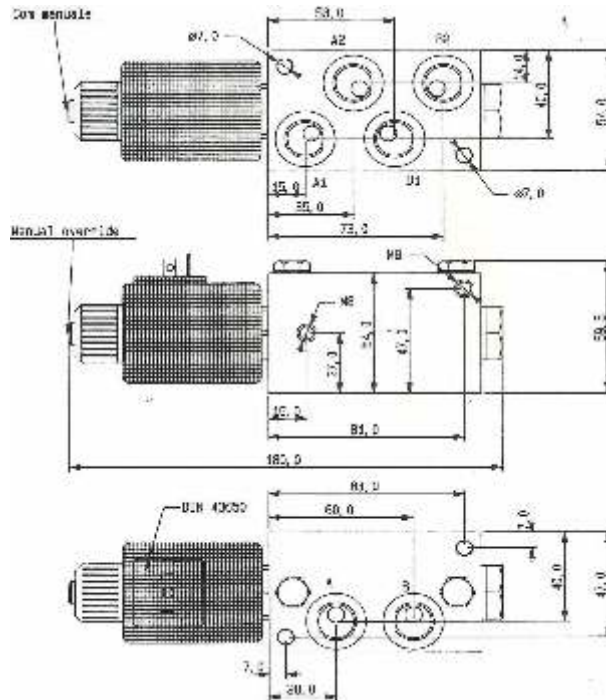


BETA RICAMBI

Tel. 081 8507823 / 8638945 - Fax 081 8500351

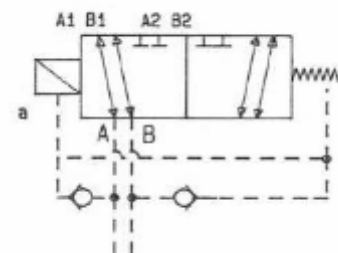
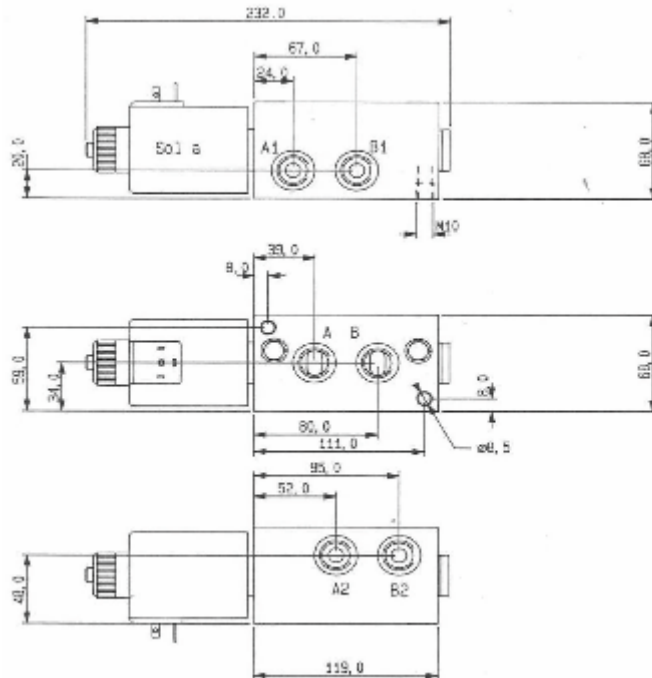
DEVIATORE FLUSSO 6 VIE ELETTRICO

Beta Ricambi



CODICE	IN	A-B	Volt	PORTATA MAX Lt. / min	PRESSIONE MAX Bar
ND108	3/8"	3/8"	24	40	260
ND108A	3/8"	3/8"	12	40	260

*Misure espresse in mm



CODICE	IN	A-B	Volt	PORTATA MAX Lt. / min	PRESSIONE MAX Bar
ND109	1/2"	1/2"	24	75	250
ND109A	3/4"	3/4"	24	75	250

*Misure espresse in mm

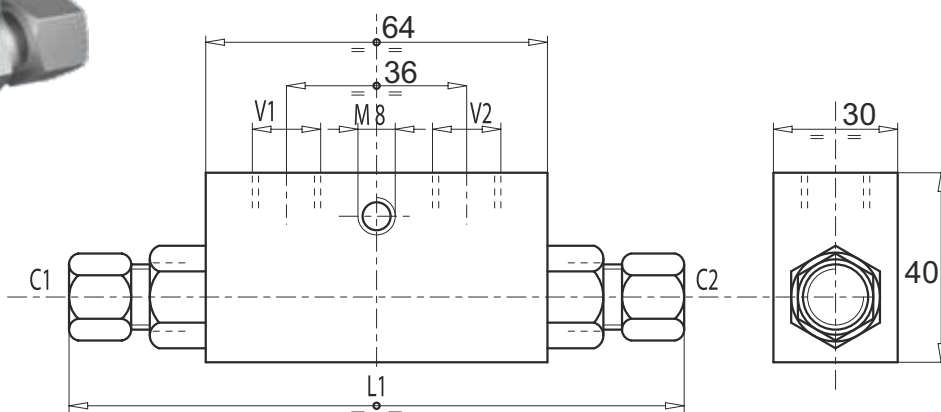
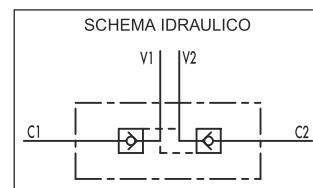


BETA RICAMBI

Tel. 081 8507823 / 8638945 - Fax 081 8500351

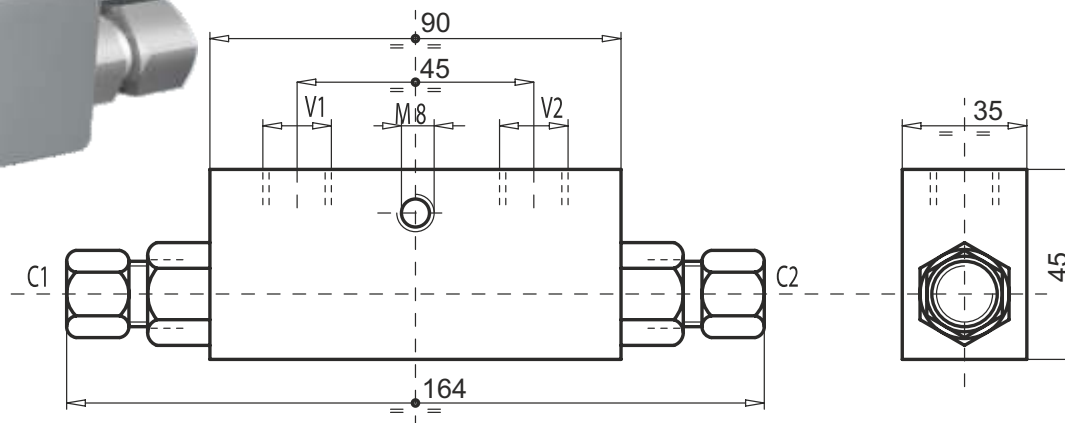
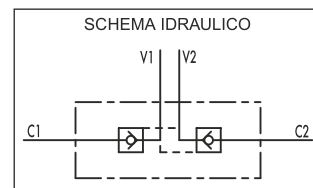
VALVOLE DI BLOCCO PILOTATE DOPP/EFF

Beta Ricambi



CODICE	V1-V2	C1-C2	L1	PORTATA MAX Lt. / min	PRESSIONE MAX Bar
NV122	1/4"	10L	125	20	350
NV123	3/8"	12L	130	30	350

*Misure espresse in mm



CODICE	V1-V2	C1-C2	PORTATA MAX Lt. / min	PRESSIONE MAX Bar
NV159	1/2"	15L	50	350

*Misure espresse in mm

Hydraulic Division



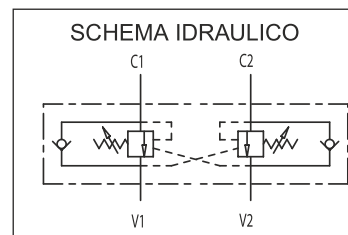
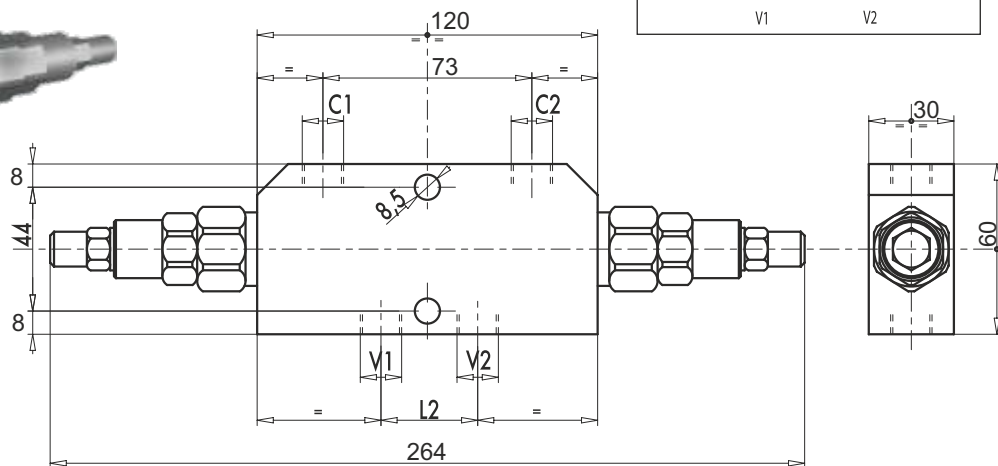
BETA RICAMBI

Tel. 081 8507823 / 8638945 - Fax 081 8500351

VALVOLE DI BLOCCO PILOTATE DOPP/EFF

Beta Ricambi

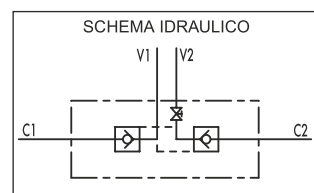
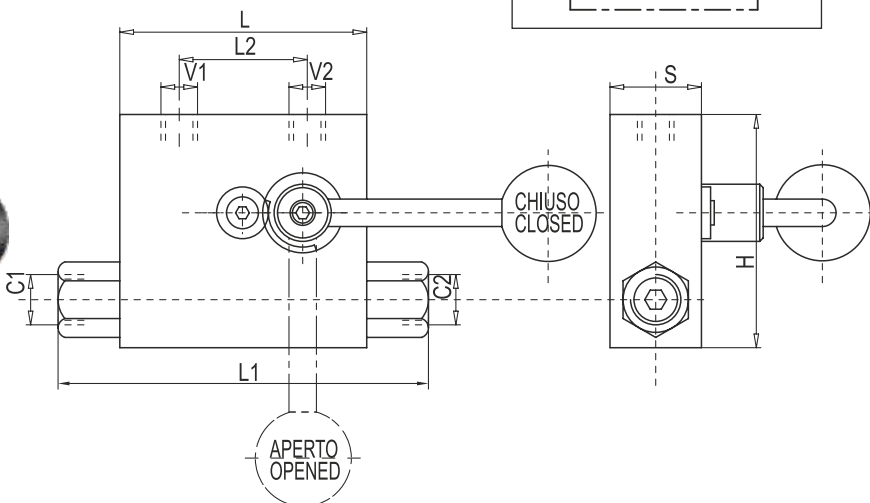
VALVOLA DI BLOCCO OVERCENTRE



CODICE	C-V	L2	PORTATA MAX Lt. / min	PRESSIONE MAX Bar
NV144	3/8"	34	35	350
NV145	1/2"	36	50	350

*Misure espresse in mm

VALVOLA DI BLOCCO CON RUBINETTO



CODICE	V1-V2	C1-C2	L	L1	L2	H	S	PORTATA MAX Lt. / min	PRESSIONE MAX Bar
NV142	3/8"	12L	64	134	36	60	30	30	350
NV143	1/2"	15L	90	164	45	70	35	50	350

*Misure espresse in mm

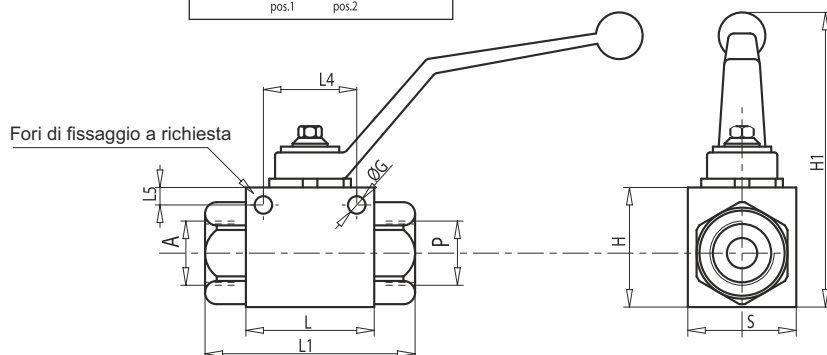
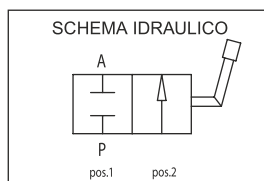
Hydraulic Division



VALVOLE VARIE

Beta Ricambi

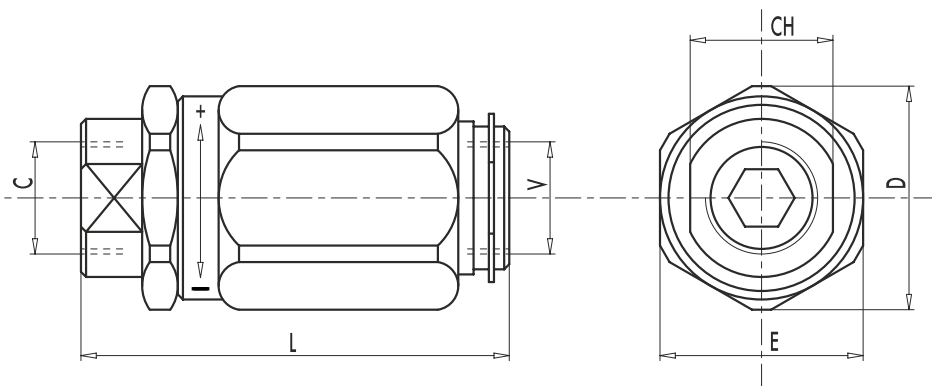
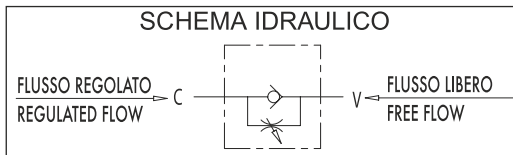
RUBINETTO A SFERA 2 VIE



CODICE	A-P	L	L1	L4	L5	ØG	H	H1	S	PRESSIONE MAX Bar
NR313	1/4"	42,5	70	34	4,5	5,25	35	90	25	500
NR189	3/8"	44,5	76	34	4,5	5,25	40	95	30	500
NR190	1/2"	48,5	83	36	5	5,25	40	95	40	500
NR191	3/4"	62,5	95	50	6	6,25	55	110	55	400
NR312	1"	66,5	110	50	6	6,25	60	120	60	350

*Misure espresse in mm

VALVOLA REGOLA FLUSSO UNIDIREZIONALE



CODICE	C-V	L	E	CH	D	PORTATA MAX Lt. / min	PRESSIONE MAX Bar
NV126	1/4"	66,5	30	19	34	20	300
NV124	3/8"	73	32	24	36	45	300
NV125	1/2"	80	38	27	42	70	300

*Misure espresse in mm

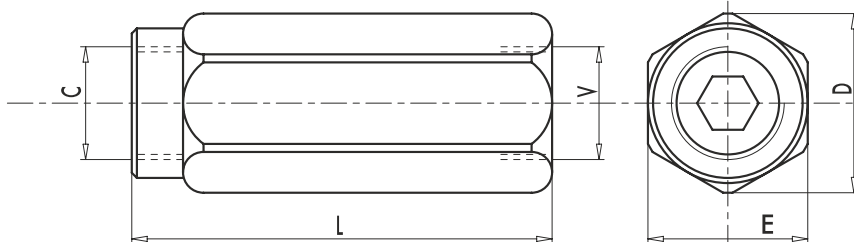
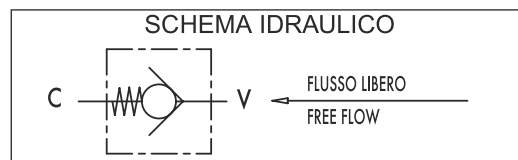
Hydraulic Division



VALVOLE VARIE

Beta Ricambi

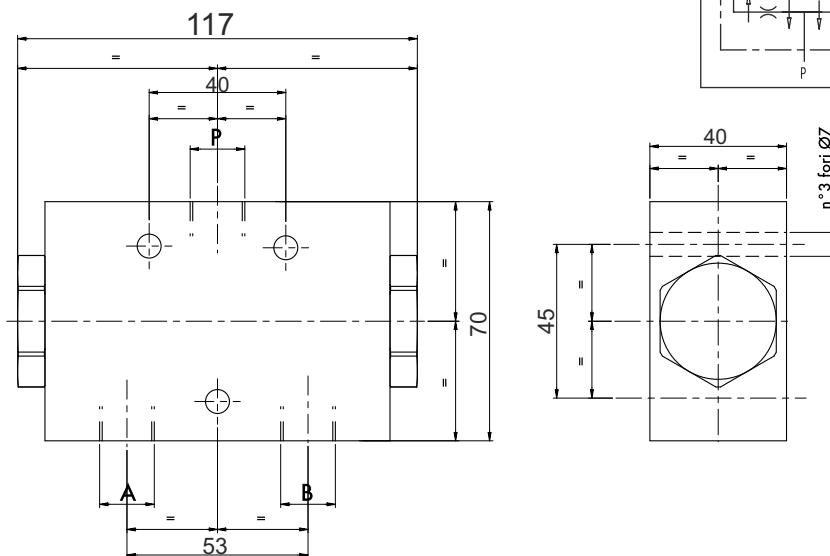
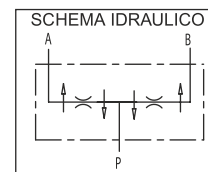
VALVOLA UNIDIREZIONALE DI NON RITORNO



CODICE	V-C	L	E	D	PORTATA MAX Lt. / min	PRESSIONE MAX Bar
NV137	1/4"	62	19	21	20	350
NV138	3/8"	68	24	26,5	45	350
NV139	1/2"	77	30	34	70	350
NV140	3/4"	88	36	40	110	350
NV141	1"	105	41	46	160	350

*Misure espresse in mm

VALVOLA DIVISORE FLUSSO 2 STADI



CODICE	P-A-B	PORTATA MAX Lt. / min	PRESSIONE MAX Bar
NV155	3/8"	1-3	300
NV154	3/8"	3-6	300
NV112	3/8"	6-10	300

*Misure espresse in mm

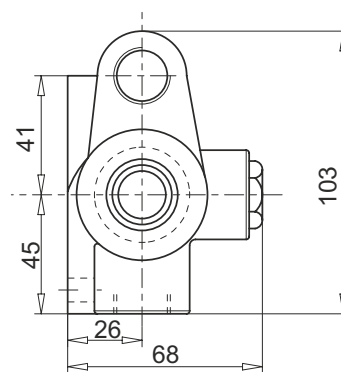
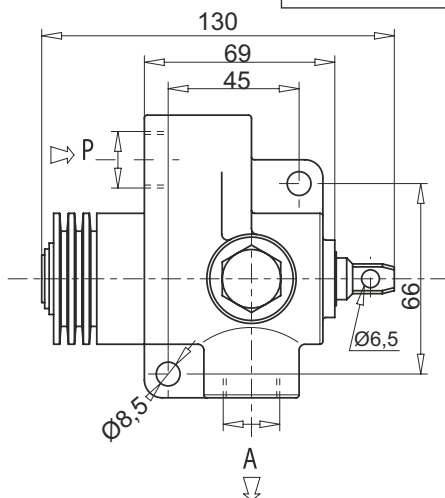
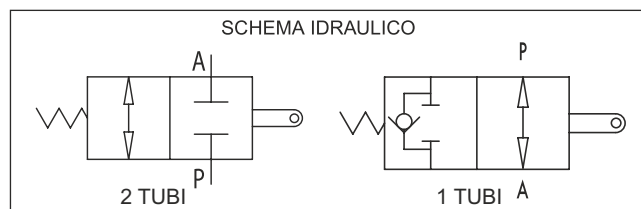
Hydraulic Division



VALVOLE FINE CORSA

Beta Ricambi

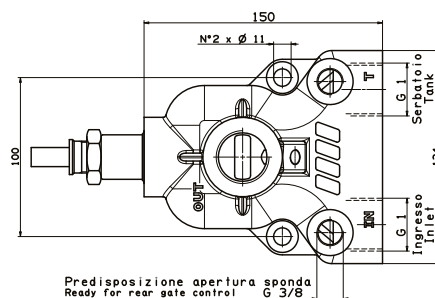
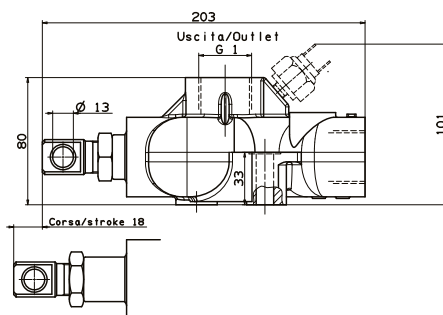
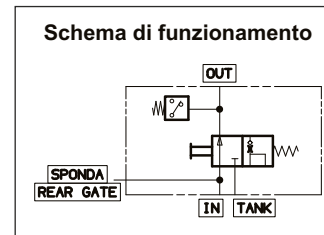
VALVOLA FINE CORSA



CODICE	DESCRIZIONE	A-P	PORTATA MAX Lt. / min	PRESSIONE MAX Bar
NV120	Fine Corsa 1 tubo	1/2"	80	350
NV121	Fine Corsa 2 tubi	1/2"	80	350

*Misure espresse in mm

VALVOLA FINE CORSA 1-2 TUBI



CODICE	PORTATA MAX Lt. / min	PRESSIONE MAX Bar
12103500200	200	350

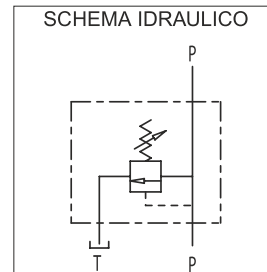
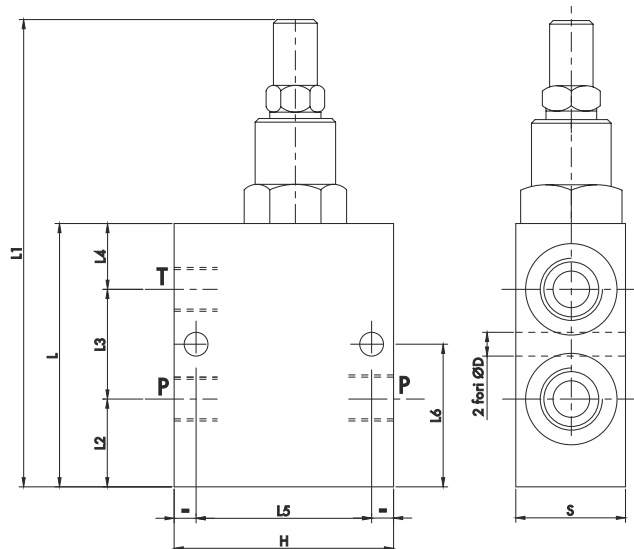
*Misure espresse in mm



VALVOLE DI REGOLAZIONE

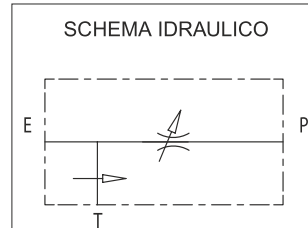
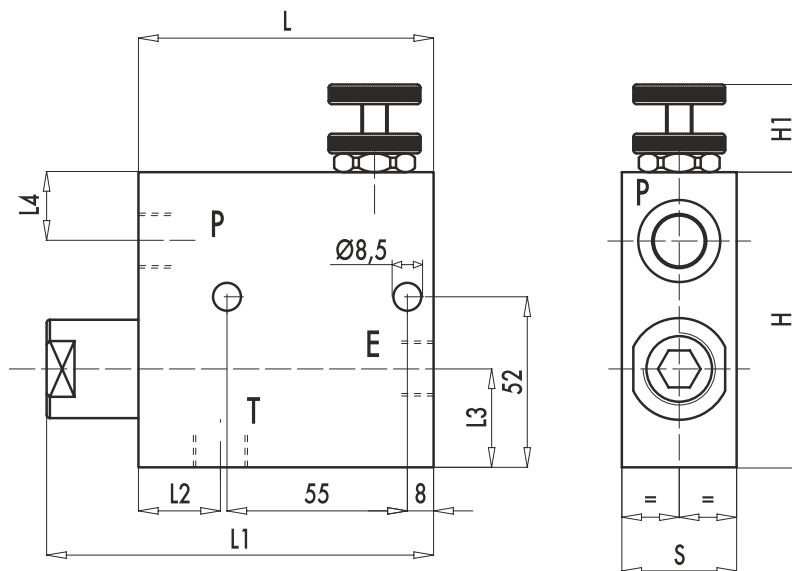
Beta Ricambi

VALVOLA DI MASSIMA



FEMMINA	PORTATA MAX L/min	P-T	ØD	L	L1	L2	L3	L4	L5	L6	H	S	CAMPO DI TARATURA
NV163	45	3/8	6,5	72	126	24	31	17	48	40	60	30	80-300
NV162	70	1/2	6,5	72	126	22	35	15	48	40	60	30	80-300
NV161	90	3/4	6,5	100	154	32	44	24	54	54	70	40	80-300

VALVOLA REGOLAZIONE DI FLUSSO



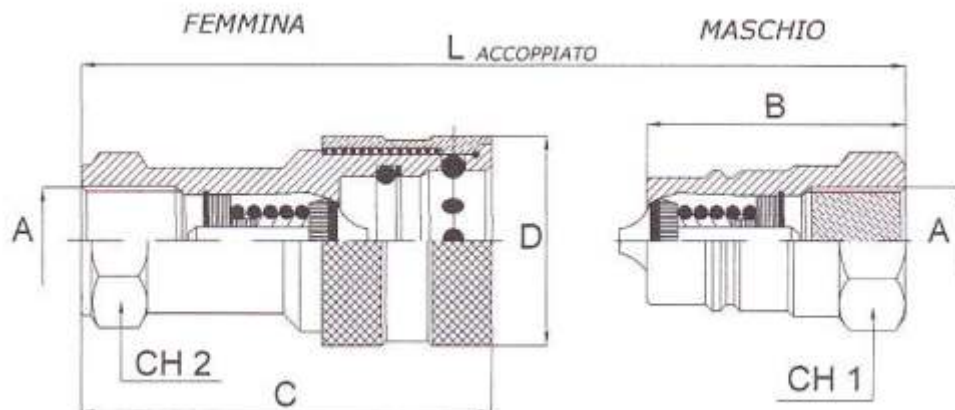
CODICE	PRESSIONE MAX BAR	PORTATA MAX ENTRANTE	PORTATA MAX REGOLATA	E-P-T	L	L1	L2	L3	L4	H	H1	S
NV164	350	60	50	3/8	90	118	25	32	20	90	40	35
NV165	350	80	60	1/2	90	118	25	32	20	90	40	35
NV166	350	120	100	3/4	90	122	27	36	19	102	40	50

Hydraulic Division



INNESTI RAPIDI

Beta Ricambi



INNESTI RAPIDI SERIE N

FEMMINA	MASCHIO	ØA	B	C	ØD	L	CH1	CH2	PRESSIONE MAX Bar
NI025F	NI025	1/4"	35	52	27	70,5	19	21	300
NI023F	NI023	3/8"	39	61	35	80	22	27	315
NI020F	NI020	1/2"	45	67	38	92	27	30	250
NI018F	NI018	3/4"	53	82	46	106,5	34	38	250
NI017F	NI017	1"	58	95,5	55	120	41	45	230

*Misure
espresse in mm



INNESTI RAPIDI SERIE TV

FEMMINA	MASCHIO	ØA	B	C	ØD	L	CH1	CH2	PRESSIONE MAX Bar
NI038F	NI038	3/8"	39	60,5	35	79,5	22	27	300
NI031F	NI031	1/2"	45	73	40	90	27	32	250
NI024F	NI024	3/4"	53	86	48	106,5	34	34	250
NI019F	NI019	1"	58	95	58	116,5	41	41	200

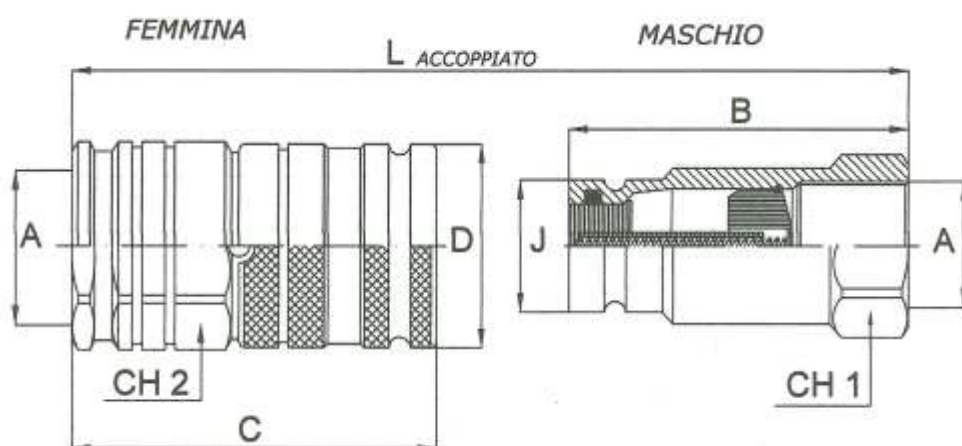
*Misure
espresse in mm

Hydraulic Division



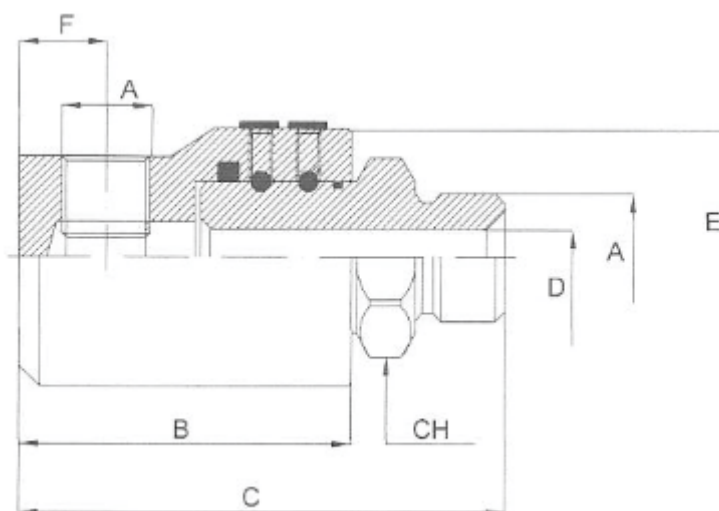
INNESTI RAPIDI - GIUNTI GIREVOLI

Beta Ricambi



INNESTI RAPIDI FACCIA PIANA

FEMMINA	MASCHIO	ØA	B	C	ØD	L	J	CH2	CH2	PRESSIONE MAX Bar
NI032F	NI032	3/8"	68	68	32	122	19,7	24	30	350
NI033F	NI033	1/2"	69	69	32	122	19,7	27	30	350
NI022F	NI022	3/4"	70	82	38	136	24,5	36	36	350
NI021F	NI021	1"	83	98	48	158	30	36	46	330



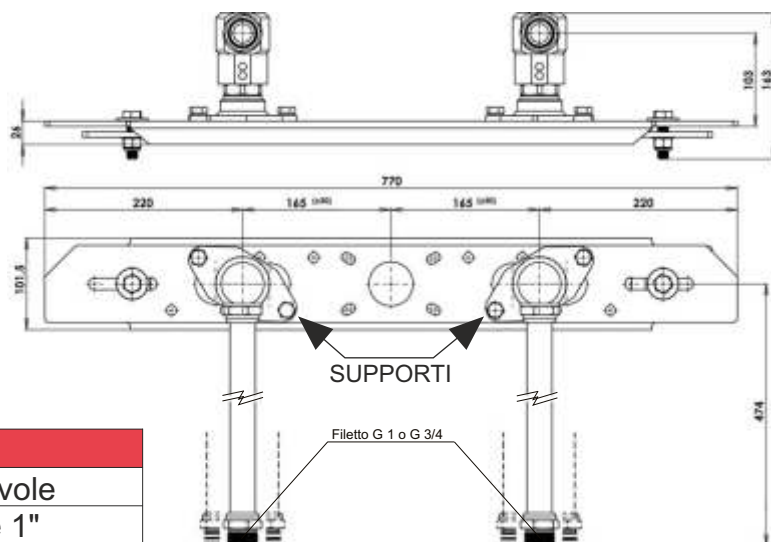
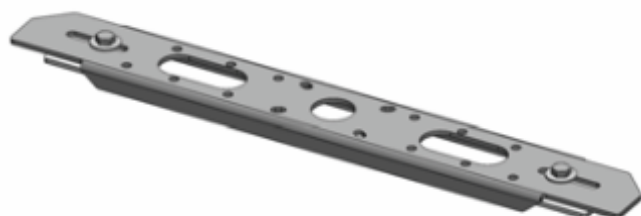
CODICE	A	B	C	D	ØE	F	CH	PRESSIONE MASSIMA ROTAZIONE (BAR)	PRESSIONE MASSIMA STATICA (BAR)
NG198	1/4	50	69	6	33,5	11	19	200	400
NG199	3/8	54	76	8,5	37,5	13	24	200	400
NG200	1/2	63	87	11,5	39,5	14	27	150	300
NG201	3/4	70	100	15	54,5	18	34	150	300
NG202	1	80	113	21	55/60	25	41	100	300

Hydraulic Division



PIASTRE GIUNTI GIREVOLI

Beta Ricambi

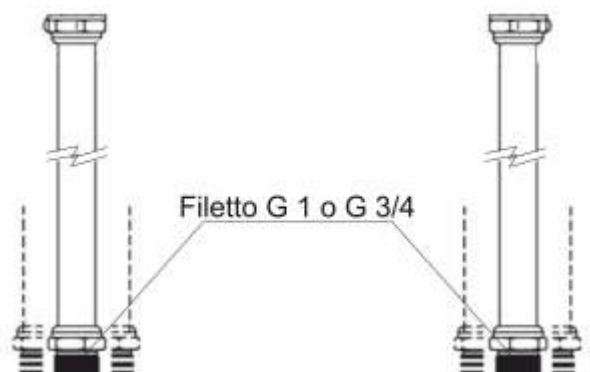


*GIUNTI GIREVOLI E TUBI RIGIDI NON INCLUSI

CODICE	DESC.
HD TRA 026	Piastra Forata Giunto Girevole
HD TRA 053	Supporto Giunto Girevole 1"



CODICE	DESC.
NS466	Piastra Giunto Girevole Regolabile a disegno

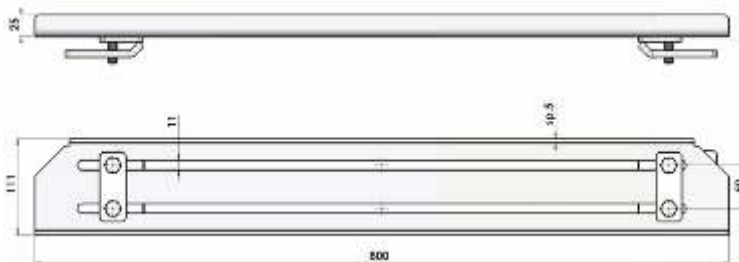


CODICE	DESC.
HD TRA 466	TUBO M/M G1" L466 PRLOLUNGA GIUNTO GIR

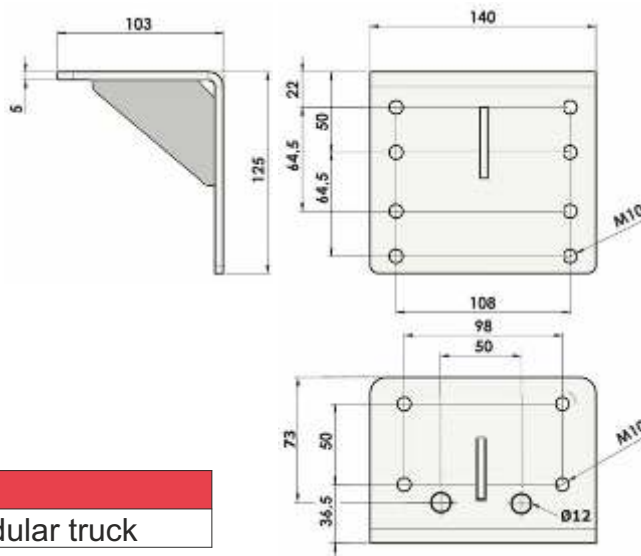
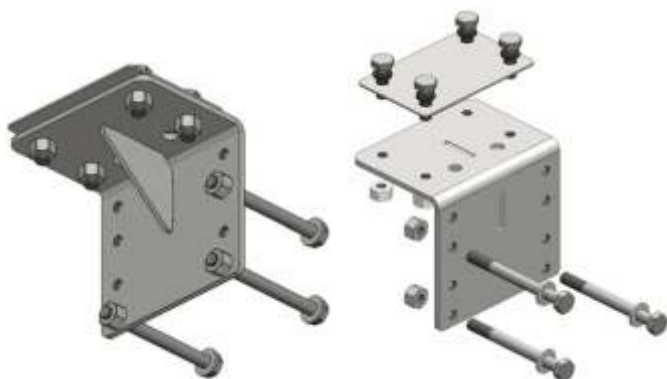


PIASTRE GIUNTI GIREVOLI

Beta Ricambi

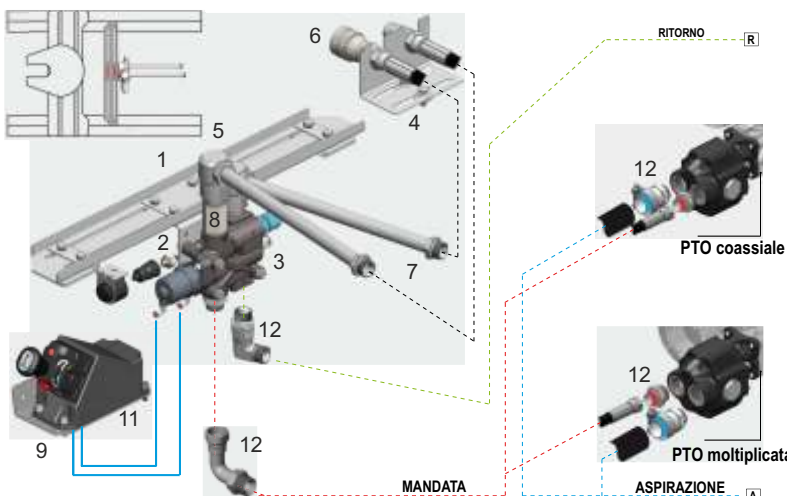


CODICE	DESC.
HD TRA 959	Traversa base per modular truck



CODICE	DESC.
HD TRA 968	Carrello laterale traversa per modular truck

Esempio di installazione



CODICE	DESC.
1) HD TRA 959	Traversa base (Vedi pag. 108)
2) HD TRA 968	Carrello Lat. (Vedi pag. 108)
3) 12101800254	Valvola modular 1"
4) 12199401118	Staffa riposo
5) -----	Giunti girevoli (Vedi pagina 106)
6) -----	Inn. rapidi (Vedi pagina 105/106)
7) HD TRA 466	Tubi rigidi (Vedi pagina 107)
8) -----	Prolunga BSPP (Vedi pagina 84)
9) 10000151005	Joystick c/interruttore
10) 10000131101	Joystick s/interruttore
11) 10000270065	Supporto Joystick
12) -----	Raccordi vari (Vedi pag. da 52 a 94)